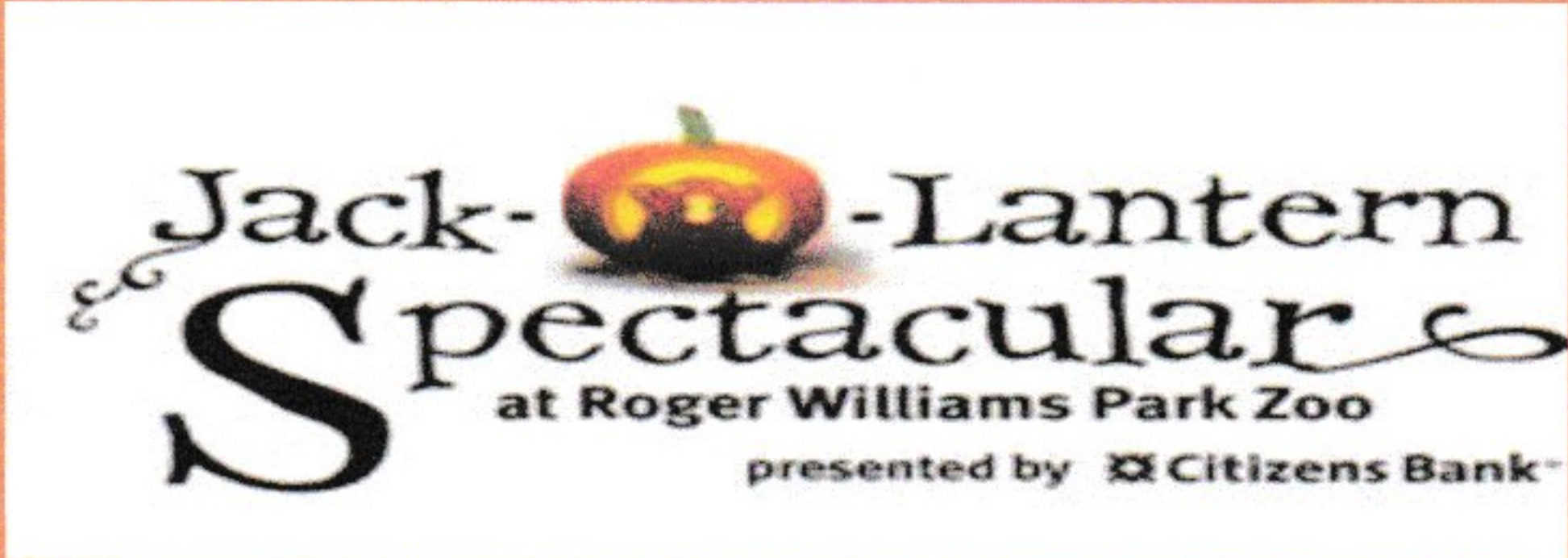
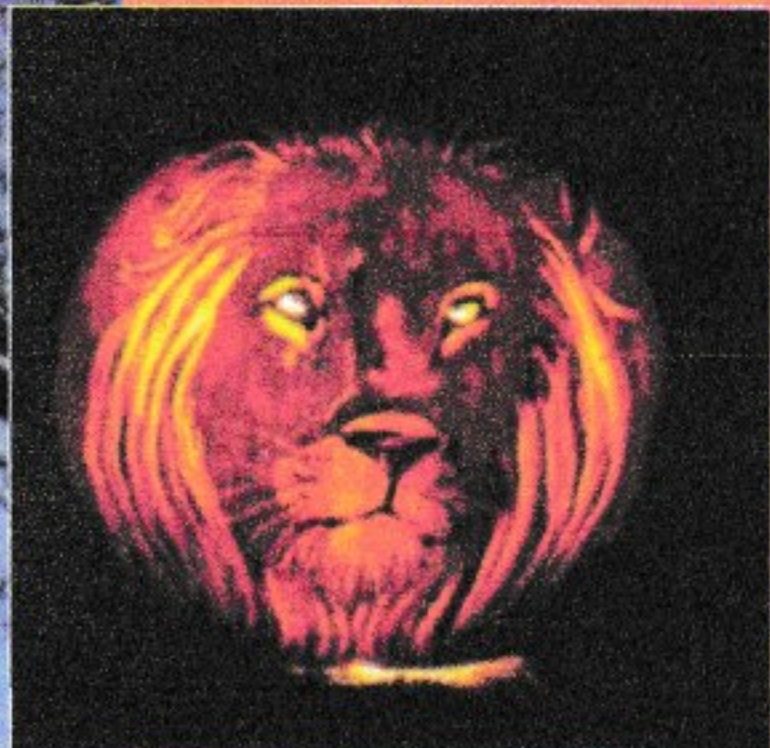


East Lyme Sr Ctr, Lymes' Sr Ctr & Waterford Sr Services Presents:



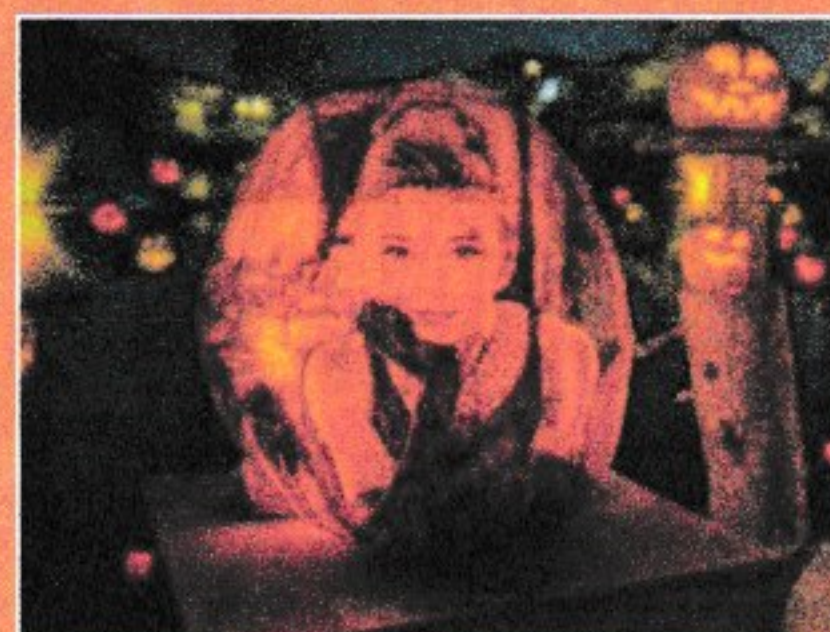
## Providence Rhode Island

### Tuesday, October 23, 2018



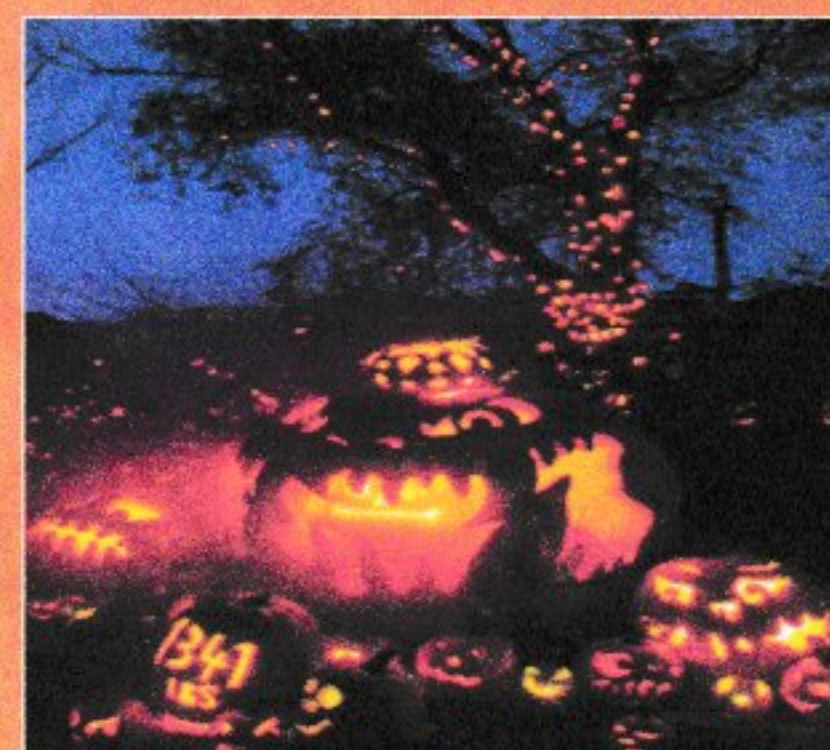
Experience the glow of thousands of pumpkins, set in a magical display of artistry during this **Early Evening Spectacular**. Take a leisurely walk


through the 1/4 mile trail as you feast your eyes on hundreds of artfully carved jack-o-lanterns depicting people, places, and scenes from popular culture to old-time favorites and everything in between - all with painstaking detail and amazing intricacy.



The event has been featured on the Today Show, CNN and hailed by USA Today as "extraordinary".

Prior to the Jack O Lantern Spectacular, enjoy free time at Providence Place Mall for shopping and dining.



 **NOTE: There is a moderate amount of walking on this trip**

**COST: \$66**.pp based on 40-52

**PLEASE REGISTER BY: September 19, 2018**  
No refunds unless seat can be sold

Depart	Est. Return	Reservations
2:00pm Old Lyme (Lymes' Senior Center)	9:30pm	860-434-1605 x 240
2:15pm East Lyme Senior Center	9:15pm	860-739-5859
2:30pm Waterford (Oswegatchie Firehouse)	9:00pm	860-444-5839



**FRIENDSHIP TOURS**  
**THE SHIP SHOP**

705 Bloomfield Ave, Bloomfield, CT 06002  
860-243-1630 • 800-243-1630

Friendship Tours arranges the components of the tour and does not own or operate the independent suppliers of services including motorcoaches. Trips cancelled because of weather conditions are handled on a per trip basis. Refunds will depend on timing of the cancellation and supplier policies. Tickets to theaters/events are non-refundable. Friendship Tours reserves the right to adjust cost based on fuel surcharges.